

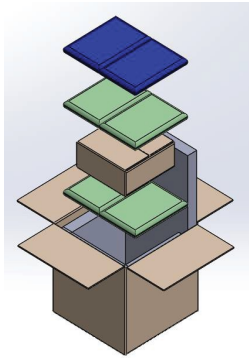


Cryopak Ecopak - Recyclable and Compostable

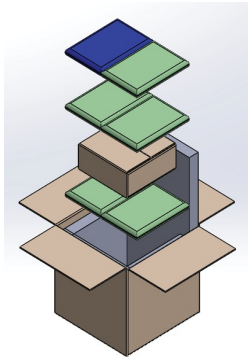
The Cryopak Ecopak liner solutions are manufactured in a zero-waste environment from a recycled fiber blend and wrapped in a compostable film that absorbs moisture. Our material is manufactured to ensure that each liner provides consistent thermal performance for all our customer's specific needs.

Markets & Applications

- Cold Chain Solutions
- Food and beverage delivery
- Pharmaceuticals
- Clinical studies/trials
- Any product requiring temperature control



Summer Packout



Winter Packout

Fully Customizable - Can Be Made In Any Size



Benefits:

- Multiple Thickness Options Available From 0.5" - 2.0" For Customizable Performance
- Dimensional Weight Savings Opportunities
- Cushioning Provides Superior Payload Protection
- Recyclable and Compostable

Replaces:

- EPS Products
- Foam or other insulators

Standard Product Details

Item #	Product Name	Time Duration	ID of Corrugate L x W x H (in.)	ID of Payload Box L x W x H (in.)	Temp Range	Refrigerant
FELP00005	6" cube, EcoPak, Kit, Gel Pack	36-48	11.875" x 11.875" x 11.5625"	8" x 8" x 3"	2-8°C & CRT	1.8 lb gels
FELP00006	10" cube, EcoPak, Kit, Gel Pack	48	16.25" x 16.25" x 16.8125"	11" x 10" x 5.5"	2-8°C & CRT	3 lb gels
FELP00007	12" cube, EcoPak, Kit, Gel Pack	48	18.5" x 18.5" x 18.5"	12" x 12" x 8"	2-8°C & CRT	3 lb gels
FELP00008	6" cube, EcoPak, Kit, Gel/PCM5 Blanket	48	11.875" x 11.875" x 11.5625"	8" x 8" x 3"	2-8°C & CRT	1.8 lb gels and PCM5 blankets
FELP00009	10" cube, EcoPak, Kit, Gel/PCM5 Blanket	48	16.25" x 16.25" x 16.8125"	11" x 10" x 5.5"	2-8°C & CRT	3 lb gels and PCM5 blankets
FELP00010	12" cube, EcoPak, Kit, Gel/PCM5 Blanket	48	18.5" x 18.5" x 18.5"	12" x 12" x 8"	2-8°C & CRT	3 lb gels and PCM5 blankets
FELP00011	Custom size, EcoPak, Kit, Gel, 17.5x14.5x15	48	17.5" x 14.5" x 15"	14" x 10.5" x 5"	2-8°C & CRT	5 lb gels

United States

551 Raritan Center Parkway • Edison, NJ 08837
(T) 1888.827.3393

Canada

11000 Boulevard Parkway • Anjou, QC H1J 1R6
(T) 1888.423.7251

Europe

1 rue Berthelot • 76150 Maromme France
(T) +33 (0) 2 32 82 59 65

